



Newsletter

April 2017—Spring Term— Issue 2

Cheslyn Hay Primary School

ATTENDANCE

This term we have continued to focus on improving attendance in school. We have been looking at ways to encourage children to be in school as much as they can and have decided that at the end of each term we will be having an assembly in school to celebrate all the children that have achieved 100% attendance for the term. In this assembly children will be given 100% attendance badge, an attendance pencil and certificate. Each term, there will be a different coloured badge and the children can try to collect all three colours over the year. At the end of the year, we will continue to celebrate those children who have achieved 100% over the whole year as we have in previous years, and look at a reward for these children.

Year Group	Attendance %
Nursery	94.0
Reception	96.1
Year 1	95.0
Year 2	96.6
Year 3	94.2
Year 4	94.6
Year 5	94.9
Year 6	96.7
Total	95.4

As well as this, our Education Welfare Officer (EWO) makes termly visits to look at the attendance registers and, this term, she has provided an attendance clinic for parents of children whose attendance has fallen below 90%.

Our attendance at the moment is 95.4% however, our target is 96%. Please continue to work with us so we can achieve our goal.



WEBSITE

The new school website has launched this week. There are still sections of it that are under constructions however, it is at a point where we feel it is ready to be shared. After Easter, we will begin to develop the site even more and will use it to communicate with parents. There is a calendar on the website to which parents can subscribe. We will also attach letters to the website so parents can access them. The website address is www.cheslynhay-primary.staffs.sch.uk. Please let us know what you think of the new website.



SHOW STOPPERS Thursday 6th July

Thank you to all those children who auditioned for Show Stoppers. The standard was very high which made the decision making process very difficult. We are now looking forward to preparations for the show which will begin on Tuesday 26th April, 3.30-4.30pm for all group acts. Further details about the show and purchasing tickets will follow shortly.

DOGS

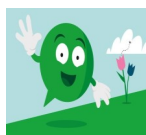


It has been noticed recently that parents are beginning to bring dogs when collecting their children from school and taking the dogs onto the school playground. Can I remind parents that **no dogs** are permitted on the school site for health and safety reasons. This also includes the leisure centre and High School site.

BIKES AND SCOOTERS



A number of parents have raised concerns around children riding their bikes and scooters on the playground at the beginning and end of the day. The playground gets very crowded, as does the path from the playground towards the High school, with not only parents but also younger children. In the interests of safety, children will no longer be allowed to ride their scooters and bikes on the site. Children are encouraged to ride their bikes/scooters to school, however they will be expected to get off them at the gate and walk them to the bike shed.



NSPCC

The Speak out. Stay Safe.

Buddy, the NSPCC mascot, will be in school on Tuesday 25th April to join in with our KS1 & 2 sponsored sports activity which will raise money for the vital work of the NSPCC. All the children will need their PE kit in school that day so they can take part in the event. They will be reminded to bring their sponsor forms, and any money, back into school on Wednesday 3rd May.



01922 857080



www.cheslynhay-primary.staffs.sch.uk



office@chps.school



DATES FOR YOUR DIARY



26th April	Y4 trip to London (The Lion King)
3rd May	Early Years - Animal Man visit
4th May	Y1 Skipping Event
8th - 12th May	Y6 SATs week
12th May	Y2 Trip to Tamworth Castle
15th May	Swimming Gala
16th May	Cross Country qualifiers
17th May	1C Class Assembly
18th May	Y6 Group Leavers photo
26th May	Bring Family to school morning
29th May - 2nd June	May Half term
8th June	KS1 Mini Olympics
12th June	Photographer in (Whole School)
21st June	RS Class Assembly
28th June	RH Class Assembly
30th June	Y5/6 Mini Olympics
7th July	Y3/4 Mini Olympics
12th July	Nursery Class Assembly

PLAYGROUND EQUIPMENT

Can we please remind parents that children should not be playing on the equipment on the Early Years playground after school as it is unsupervised at this time.

100% ATTENDANCE

Well done to all of the children that have achieved 100% attendance this term and received their first badge. There were a total of 126 children that achieved 100% attendance since January. Keep up the good work!

VIDEO GAMES

It has come to my attention recently that a large number of our pupils are playing video games with 18 certificates.

I've found out that some of our Year 1 children are playing games like Grand Theft Auto and Call of Duty. Please be aware that these games have been given an 18 certificate for a reason and their content, language and graphic images are completely unsuitable for children of primary age.

If we notice that a child's behaviour in school is inappropriate and it is found that these types of games are being played at home and potentially having an impact on their behaviour, school would seek to work with families in developing understanding as to why they are unsuitable. However, if after working with school, the games continue to be played and there were still concerns around a child, it may be that we would have to look at making a referral to the Local Authority safeguarding team.

If you have children that play these games, please take the time to view the content and consider whether you would allow your child to observe the type of behaviour and language in real-life.



SPORTS AT CHESLYN HAY

We would like to say a big well done to all pupils who have represented the school in sport competitions this half term. Year 6 have qualified for the Level 3 Cross country and Hockey tournaments. Children showed great sportsmanship and worked really well as individuals and a team.

EARLY YEARS

The children in Nursery and Reception have had a great half term exploring food groups, baking, juicing and looking at life cycles of animals. We have seen the arrival of our frogspawn and look forward to seeing this develop after the Easter holidays. We also look forward to the arrival of our live eggs and animal adventures.

NEW CAR PARK



The new car park has now been in use for half a term. Whilst there are always going to be issues around parking on a site shared by three establishments with around 1800 pupils arriving and leaving at the same time as well as Leisure Centre users, it does appear that the new car parking system has had a positive impact. I would like to make parents aware of a number of things when using the primary school car park. The opening times are as follows:

- Morning: 8:15am - 9:05am
- Afternoon: 2:45pm - 4:30pm (whilst the car park opens at 2:45pm, parents will not be allowed on the school site until 3:00pm)

There will be occasions, such as class assemblies and parent's evening, where the car park may be left open slightly later for parents however the above times have been set in cooperation with the High School as the car park gate is part of their perimeter and needs to be locked within the day in order to secure their site.

Please observe a speed limit of 5mph as there are children walking across the car park and only use dedicated car parking bays as some parents are parking along the barrier that separates the entrance to the primary car park from the High School coach park and this is preventing other cars from getting out and leading to congestion.

Thank you for your support in this matter.



01922 857080



www.cheslynhay-primary.staffs.sch.uk



office@chps.school